



mounting  
systems



## E-Port Home

We offer a high quality steel carport system, which is available in combination with our Trapeze ProLine. Short assembly time, high quality and optimum user-friendliness has been the focus during the development of the new Carport Home. However, not only the simple assembly makes the system attractive, but the fast project handling from planning to installation.

### Our highlights

- Innovative design
- Market-compliant engineering
- Complete package in silver with accessories or in black
- Attractive price-performance ratio
- Technical contact around the clock

Please contact us, we will be happy to advise you:

**Mounting Systems GmbH**  
Mittenwalder Straße 9a  
D 15834 Rangsdorf  
Tel.: +49 33708 529-100  
Fax: +49 33708 529-199  
sales@mounting-systems.com

**Mounting Systems GmbH**  
Rolshover Str. 524  
D 51105 Köln  
Tel.: +49 221 29277-600  
Fax: +49 33708 529-199  
salesglobal@mounting-systems.com



Open Terrain



Trapezoidal sheet



Framed module



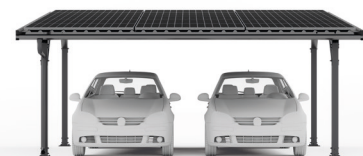
Orientation landscape



10  
Years  
Warranty



E-Port Home Single



E-Port Home Double



mounting  
systems

**Included in the package:**

- Variable cable routing (cable duct can be fixed to any post with up to 3 clamps)
- Substructure for solar modules
- Continuous trapezoidal sheet (approx. 1.1m x 5.2m)
- Roof edging
- Drainage

**Founding**

Anchored in the ground  
Simple assembly without special tools

**Modules**

Space for up to 15 modules (1.0m x 1.7m)

- with a module power of 300Wp
- total power 4.5kWp

**Optionally available:**

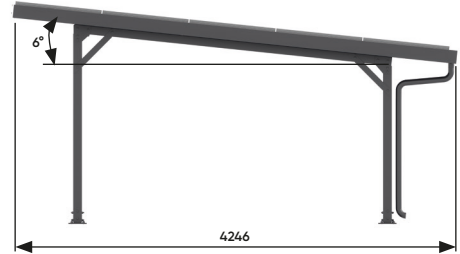
Plate (without drill holes) for mounting the inverter and/or charging station

**Colour**

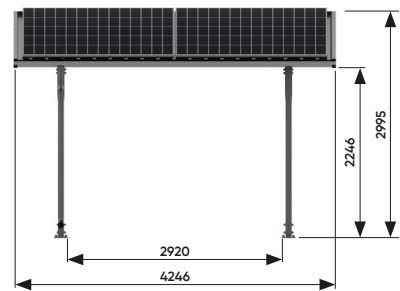
Black

**Requirement**

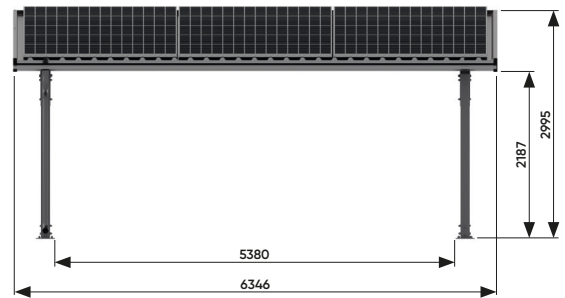
No shadowing



Side view



Front view: Single



Front view: Double