



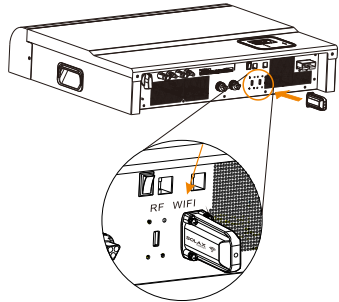
# Pocket Wifi 2.0 User Manual

Please read this user manual carefully before use.

## Installation

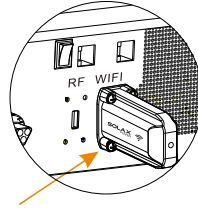
Cut off all power of inverter before installation!  
Wait for 5 minutes after power off.

① Plug Pocket Wifi 2.0 into "Wifi" port or "WiFi/Lan/GPRS" port at the bottom of inverter.



\*Notes: Inserting Pocket Wifi 2.0 into "RF" port or "Upgrade" port may lead to system failure.

② Screw it tightly.



③ Power inverter on, then set the wifi.

Step1: Use a laptop/smartphone to search for WIFI signal from the inverter.  
(The SSID : Solax\_XXXXXXX)

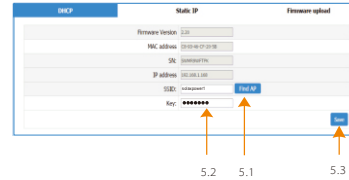
Step2: Connect to WIFI signal .

Step3: Open a browser(IE, Firefox, Chrome) and type in "http://5.8.8.8/."

Step4: Type in username and password.  
(username: admin, password: admin)

Step5: Enter setting page.  
5.1 Connect to home router by clicking "Find AP"  
or manually input home router's SSID.  
5.2 Input password of home router as "key".  
5.3 Click "Save".

Enter setting page.



5.4 Make sure save configuration has done.

Save Config Done! Please wait 15 seconds!!!Return

## Notes and troubleshooting for WIFI setting! Notes

- The signal strength will be affected by barriers between inverter and home router. Please keep the distance between inverter and home router within 10 meters (open space).
- SolaX suggests that smartphone is more suitable than computer to do WIFI setting.
- Please make sure that home router is under normal working condition. Any problems of router may cause wifi setting failure. ( The home router should support 802.11b/g/n. )

## Troubleshooting

Wifi signal is too weak to connect when searching it by smartphone.

Please check the wifi module has been installed tightly and shorten the distance between operator and wifi module.

Browser shows "This page can not be displayed" after typing http://5.8.8.8/.

Please use smartphone to do this step instead of laptop. After clicking Save& Reboot and entering IP Address page, the IP address shows all "0".

It means the wifi setting is failed

Please check the signal strength of home router.

( strength of signal must be over 3 bar )

Check SSID and password again.

Check whether home router is under normal working condition.

## FCC Caution

### § 15.19 Labelling requirements.

This device complies with part 15 of the FCC Rules. Operation is subject to the following two conditions:(1)This device may not cause harmful interference, and (2) this device must accept any interference received, including interference that may cause undesired operation.

### § 15.21 Information to user.

Any Changes or modifications not expressly approved by the party responsible for compliance could void the user's authority to operate the equipment.

### § 15.105 Information to the user.

Note: This equipment has been tested and found to comply with the limits for a Class B digital device, pursuant to part 15 of the FCC Rules. These limits are designed to provide reasonable protection against harmful interference in a residential installation. This equipment generates, uses, and can radiate radio frequency energy and, if not installed and used in accordance with the instructions, may cause harmful interference to radio communications.

However, there is no guarantee that interference will not occur in a particular installation. If this equipment does cause harmful interference to radio or television reception, which can be determined by turning the equipment off and on, the user is encouraged to try to correct the interference by one or more of the following measures:

- Reorient or relocate the receiving antenna.
- Increase the separation between the equipment and receiver.
- Connect the equipment into an outlet on a circuit different from that to which the receiver is connected.
- Consult the dealer or an experienced radio/TV technician for help.

### \*RF warning for Mobile device:

This equipment complies with FCC radiation exposure limits set forth for an uncontrolled environment. This equipment should be installed and operated with minimum distance 20cm between the radiator & your body.  
-RF output power(ERP/EIRP) : 11b: 18.4dBm 11g: 14.6dBm 11n20: 14.6 dBm  
-Frequency band (MHz) : 2412-2472  
-Modulation : DSSS/OFDM



④ Registration on Monitoring website.

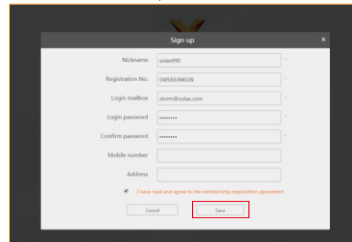
Step1: Confirm wifi configuration has done successfully, and make sure Internet service is accessible on the laptop or smartphone.

Step2: Input "https://www.solaxcloud.com" on web browser.

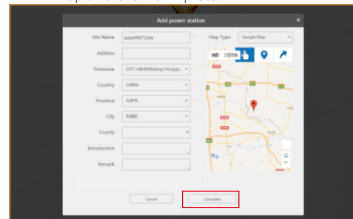
Step3: Click "Sign up" as shown below.



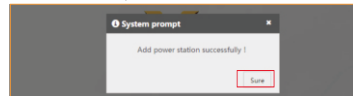
Fill up all information shown on sign up page, then click "Save". The registration is completed. (Users can find the "Registration No." on the label of Pocket Wifi 2.0)



Step4: Fill up station information on the "Add power station" pop-up window. The options with "\*" are compulsory filled. Mark you site on the map and click "Complete".



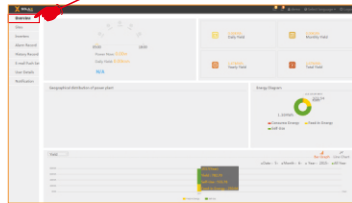
Make sure the power stations has been added successfully.



Step5: Input user name, password and verification code, then click "Login".



Click **overview page**, user can monitor inverter and check the data.

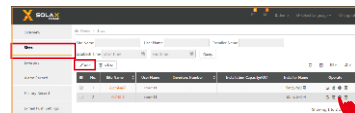


Notes: Pocket Wifi 2.0 will upload the SN number of matching inverter automatically after powering the inverter on (after 2 minutes).

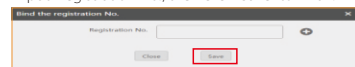
Click **Inverters** on the menu bar, user can check if Pocket Wifi 2.0 is online with **Online Status**.

**For future use**

**Add a new site**—click "Add" under the option "Site" on the menu bar and the setting page is similar to Step4.



**Add a new inverter on a site**—Choose site and click "Add", input "Registration No.", then click "Save" to finish.

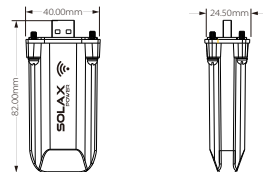


**Introduction**

Pocket Wifi 2.0 makes the long-term monitoring of PV systems feasible and efficient by collecting information from inverter including status, performance and updating information to monitoring website.

- Quick installation with "Plug & Play" function
- IP 65 dust prevention water proofing designs
- Stable data transmission and good reliability
- Low profile and nice exterior

**Appearance and Demission**



**Technical Data**

Product Name	Pocket Wifi
Model	Pocket Wifi 2.0
Supply Voltage	+3.3 V
Frequency	2.400~2.472GHz
Antenna Gain	3dB
Interface	UART/USART
Protocol	TTL
Wireless mode	802.11b/g/n
Degree of protection	IP 65
Demission	82×40×24.5mm
Weight	<35g

**Safety Instructions**

- Before installation, all power of inverter must be cut off.
- Keep away from flammable, explosive materials.
- Do not dismantle or scrap by force.
- Children should be supervised to ensure that they do not play with this appliance.

**Warranty Regulation and Liability**

**Terms and conditions**

SolaX grants a warranty of 12 months as standard. Starting from the date of the purchase invoice marked. SolaX will only perform warranty service when the faulty unit is returned to SolaX together with a copy of invoice and warranty card which were issued by the dealer to the users. In addition, the type label of the unit must be fully legible. If these requirements are not fulfilled, Suntellite reserves the right to deny warranty service.

**Exclusion of liability**

- Warranty claims are excluded for direct or indirect damage due to:
- 1: Use of unit in ways not intended, improper installation and installation that does not comply with standards, improper operation and unauthorized modification to the units or repair attempts.
  - 2: Without warranty card and serial number.
  - 3: Operating the units with defective protective equipment.
  - 4: Influence of foreign objects and force majeure.
  - 5: Inadequate ventilation.
  - 6: Non-observance to relevant safety instructions.

**Warranty Registration Form**

Please retain this page as proof of your purchase and your guarantee.

Name ..... Country .....

Phone Number..... Zip Code .....

Email .....

Address .....

Product Serial Number.....

Date of Commissioning .....

Installation Company Name .....

Date of Delivery .....

Signature .....

To register your Solax product, please mail this warranty card to:

ADD: Room 220, West Building A Sci. and Tech Park of Zhejiang University No.525, Xixi Road, Hangzhou Zhejiang Province, China 310007

Tel: +86 571 56260011 Fax: +86 571 56075753

Email: [service@solaxpower.com](mailto:service@solaxpower.com)

Web: <http://www.solaxpower.com/>

Online warranty registration is available at <http://www.solaxpower.com/en/warranty-registration/>

