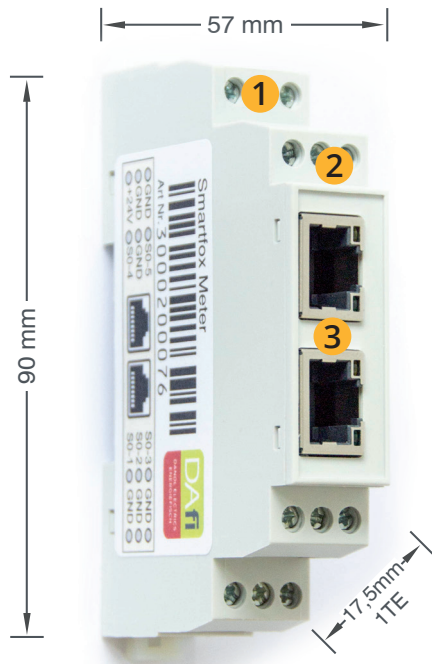




## SMARTFOX METER

### Technical Specifications



- 1 24V Power Supply**  
 The power supply is also available directly via smartfox REG.
- 2 5x S0 Inputs**  
 Data from 5 different meters can be measured and visualized.
- 3 Ethernet Switch**  
 No additional switch must be installed on your smartfox or smartfox Meter.

**The smartfox Meter makes sure your utility costs are in your control.**

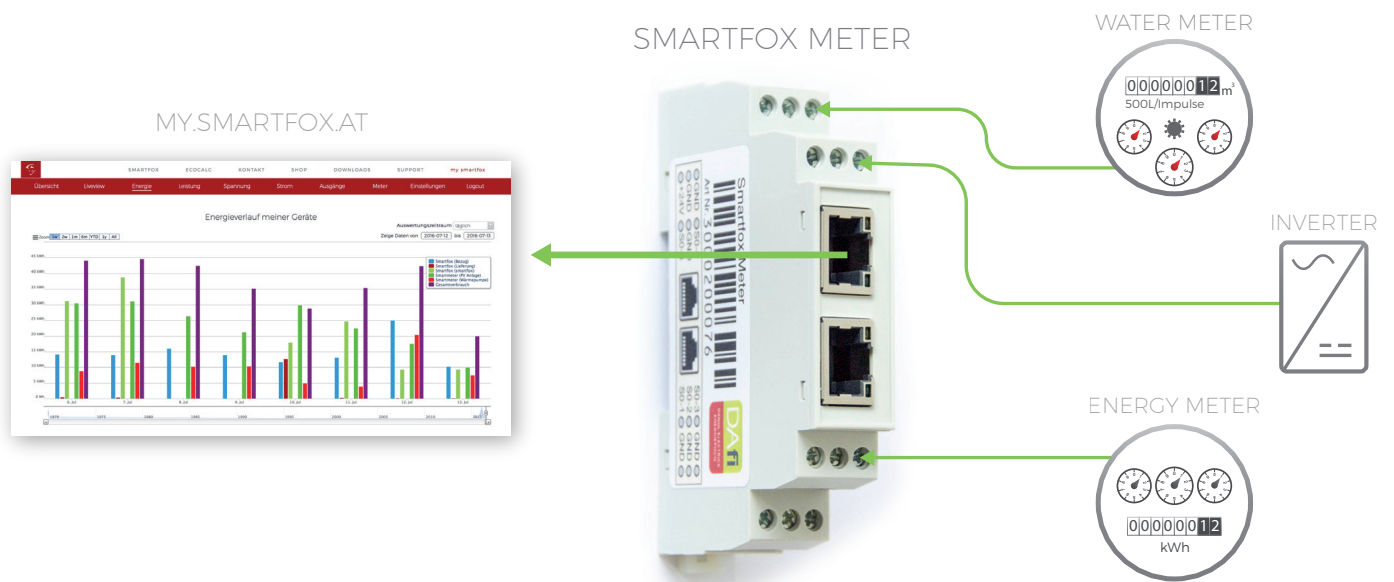
The smartfox Meter is the easiest way to completely monitor your home's energy and utility needs. With 5 S0 counters, it is possible to quickly and effortlessly measure hot water, heating, electricity and heating oil usage. It can be easily integrated into any existing system with or without smartfox. Thus, this simple addition allows you to monitor and visualize your utility costs and demands. The smartfox Meter can also be installed to measure your photovoltaic system's energy production.

# Technical Specifications

	<b>smartfox Meter</b>
Dimensions [BxHxT]	90mm x 57mm x 17,5mm
Weight	6g
S0 Meter Inputs	5
Power Supply	24V DC
Self-Consumption	1W
Interface	2 Port Ethernet Switch 10MBit
Protection Class	IP54
Operating Temperature Range	-25°C bis +40°C
Installation	DIN rail mounted for counter distributor 1 TE

Keep your utility costs under control with the smartfox Meter.

The smartfox Meter only requires a small amount of space in your meter cabinet and can be mounted anywhere. During development we focused on keeping the connection to my.smartfox.at as simple and easy as possible so that you can always know what exactly is going on in your home!



## DAfi GmbH

Niedernfritzerstraße 120  
A-5531 Eben im Pongau  
TEL +43 (0) 6458 / 20 160